



LONG ISLAND
Health
COLLABORATIVE

connecting you to better health

December 7, 2023
Quarterly Hybrid Meeting

Welcome & Introductions

Thank you for joining us!

Please introduce yourself and tell the group what organization you are representing.



Today's Meeting Agenda

Welcome & Introductions

LIHC Updates

- Inaugural Community Champion Award Presented to Keasha Guerrier, MD
- LIHC Member Spotlight: Catholic Health
- Core Cluster Update
- CHNA Workplan Updates
- 2024 Goals and Priorities

Discussion

Adjournment

Inaugural LIHC Community Champion Award

Presented to

Keasha Guerrier, MD

Chair, Family Medicine, Long Island Jewish Valley Stream Hospital;
Director, New York State Academy of Family Physicians



LIHC Member Spotlight



**Catholic
Health**

Introducing Chris Hendriks
Vice President
Community Outreach

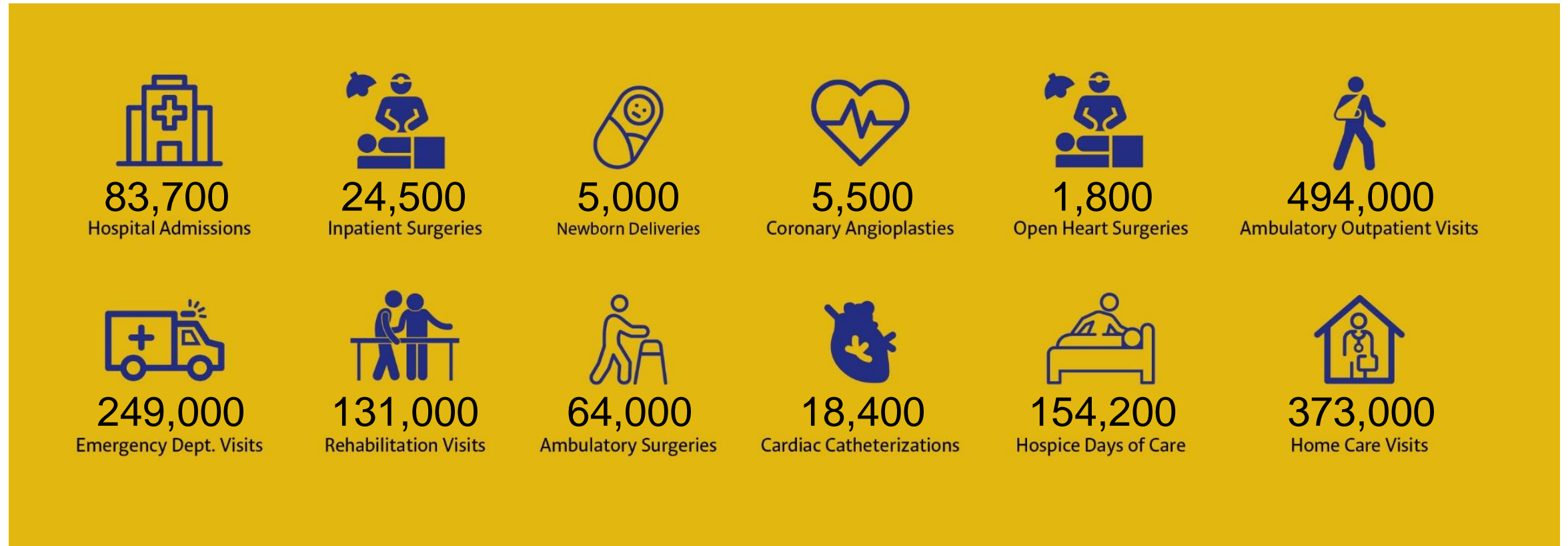
Integrated Network

Ongoing transformation to become truly integrated across Long Island

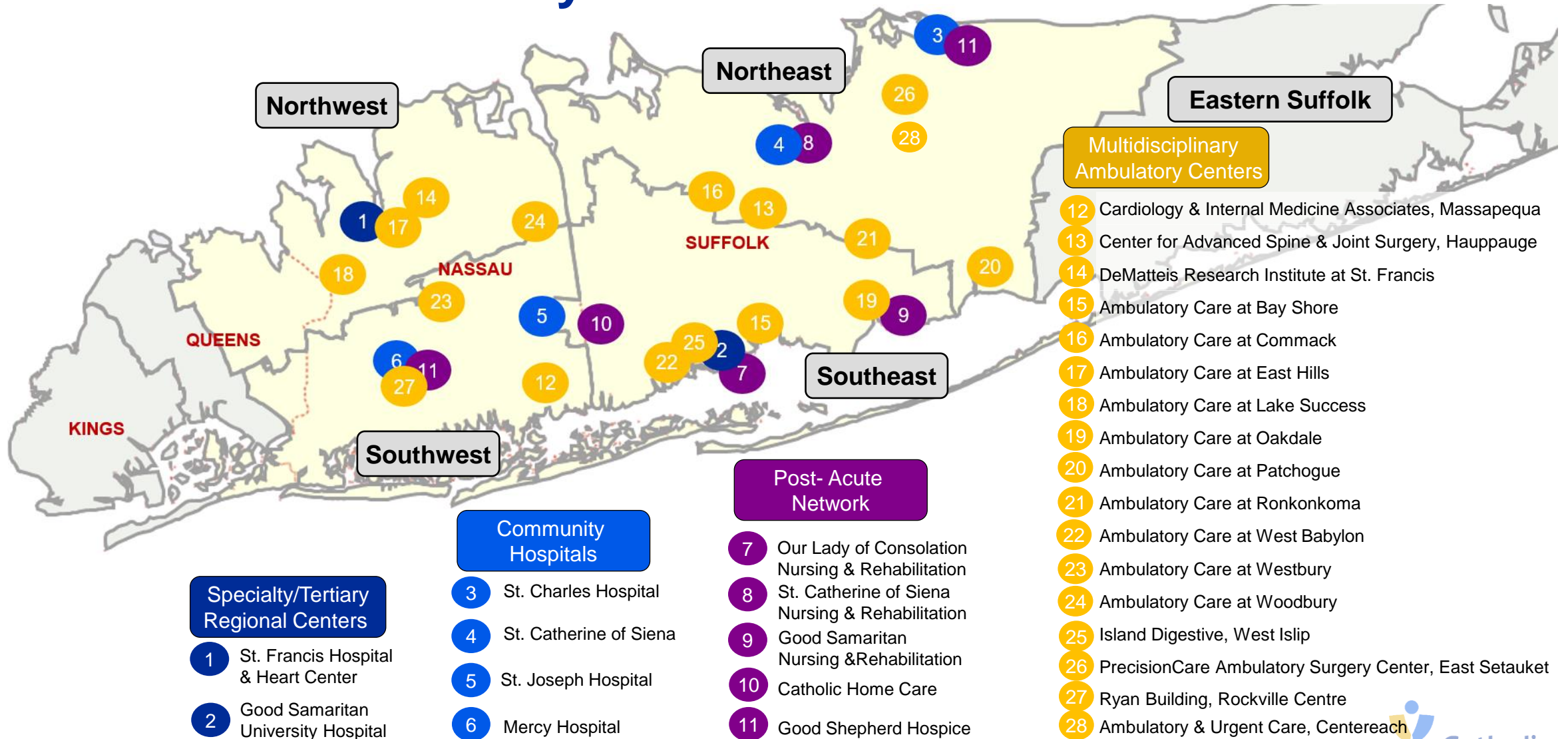
-  **Over 2,800 Catholic Health Physician Partners**
including primary care and specialists
-  **6 Acute Care Hospitals** (More than 1,900 Certified Hospital Beds)
 - St. Francis Hospital & Heart Center®, Roslyn
 - St. Catherine of Siena Hospital, Smithtown
 - Mercy Hospital, Rockville Centre
 - St. Joseph Hospital, Bethpage
 - St. Charles Hospital, Port Jefferson
 - Good Samaritan University Hospital, West Islip
-  **17 Multispecialty Ambulatory Care Locations**
-  **4 Cancer Institute Locations**
-  **14 Outpatient Rehabilitation Locations**
-  **Home Health Service**
-  **Good Shepherd Hospice**
-  **Skilled Nursing Facilities**

Fast Facts

Annual volume demonstrates patient trust in Catholic Health



Catholic Health Facility Network Overview



Community Outreach

Living the Catholic Health mission, helping the underserved

- Community Outreach buses screened more than 6,100 underserved individuals
- More than 1,400 screened at Healthy Sunday events
- Treated several hundred uninsured patients at Bishop McHugh Health Centers
- Provided 6,000+ low-cost dental visits at Stephen B. Gold Dental Clinic for Medicaid & special needs patients
- Family Care Center at Mercy Hospital, open and provided 9,000 health visits for women and children
- Catholic Health applied for \$3.25M in support from the Mother Cabrini Health Foundation in 2024.
 - This follows \$3M granted for 2023
- Speakers Bureau offering experts who cover numerous topics and bringing you current information for free in-person or virtually



Recognized Leader in Diabetes Education

Catholic Health has achieved full recognition as Diabetes Education Centers of Excellence by the American Diabetes Association

 St. Charles Hospital

 500 Commack Road PCP

 St. Francis Hospital & Heart Center®

 Dr. Avichal -
Endocrinology

 St. Joseph Hospital

 Pediatric
Endocrinology

 Great South Bay PCP

Mercy Hospital 

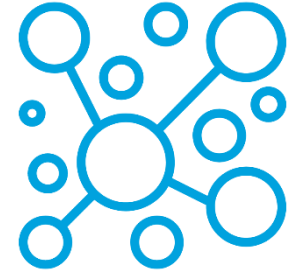
W Babylon
Endocrinology 

 Good Samaritan Hospital

- 1 St. Charles Hospital (outpatient Diabetes Education Program)
- 2 St. Francis Hospital (outpatient Diabetes Education Program)
- 3 St. Joseph Hospital (outpatient Diabetes Education Program)
- 4 Mercy Hospital (outpatient Diabetes Education Program)
- 5 Great South Bay PCP practice

- 6 Dr. Avichal's Endocrinology Practice, New Hyde Park
- 7 W. Babylon Endocrinology
- 8 500 Commack Road PCP
- 9 Pediatric Endo, 655 Deer Park Ave
- 10 GSH Maternal Fetal Medicine

LHC Core Cluster Updates

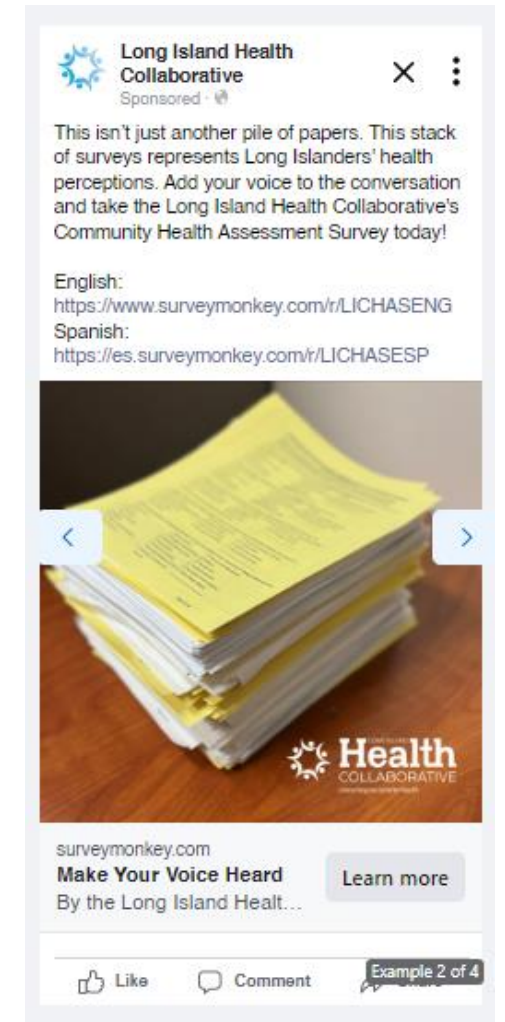


- Agendas and recorded meetings now housed in Google Drive
- Bi-monthly cadence; poll for January cluster meetings to come
- Individual Cluster Updates
 - Chronic Disease
 - Mental Health
 - Cultural Competency / Health Literacy
- **New participants welcome!** Email boliveri@nshc.org to be added to distribution list(s)

Ongoing Engagement

Community Health Assessment Survey

- English: <https://www.surveymonkey.com/r/LICHASENG>
- Spanish: <https://es.surveymonkey.com/r/LICHASESP>
- LIHC is currently boosting links on social media
- Please distribute links, QR codes and/or paper copies at:
 - Digital newsletters
 - Outreach events
 - Social media
 - Etc.
- All CHAS surveys, links, social media posts, and printable QR code signs are available in a Toolkit via [Google Drive](#)



Ongoing Engagement

Collaborative Communications

- Bi-weekly email newsletter to 400+ contacts
- Submit your free events, resources, jobs, and more to boliveri@nshc.org
- [Subscribe to Collaborative Communications](#)

LIHC Events Calendar

- Submit your events [here](#)

Walk with a Doc / Walk Safe with a Doc

- Opportunity to partner
- LIHC handles coordination, just asks for your efforts to co-promote

Ongoing Engagement

Keep Long Island Covered

- Stacks of flyers in the back of the room for those who are attending in person

Tame the Triple Threat COVID, Flu, RSV Vaccination Campaign will be live in the next few days



The rules have changed.

Don't lose your health insurance. **Re-enroll now.**

Automatic enrollment for Medicaid recipients ended June 1. You are at risk of losing your insurance if you don't recertify. Call today for help re-enrolling in Medicaid, Child Health Plus, or the Essential Plan. Members of special populations like the Aged, Blind, and Disabled must also recertify to keep coverage.

Call now. 

Our operators will direct you to the appropriate agency:

631-435-3000

For More Information: **631-435-3000 | #keepLICovered**

 Nassau-Suffolk Hospital Council
 guidance & counseling services


2024 Meetings

- Hybrid quarterly meetings to continue, registration links on [LIHC website](#)
 - Thursday, March 28, 9:30-11:30 AM
 - Thursday, June 27, 9:30-11:30 AM
 - Thursday, September 26, 9:30-11:30 AM
 - Thursday, December 5, 9:30-11:30 AM

Discussion



Adjournment

Thank you!

www.lihealthcollab.org

(631) 963-4167

lihc@nshc.org