



**Office of
Mental Health**

Suffolk and Nassau County Mental Health Programs: An Overview

**Nassau-Suffolk Hospital Council Meeting
November 15, 2017**

Introduction

Martha A. Carlin, Psy.D

Director – Long Island Field Office

New York State Office of Mental Health (OMH)



Office of
Mental Health

What is OMH?

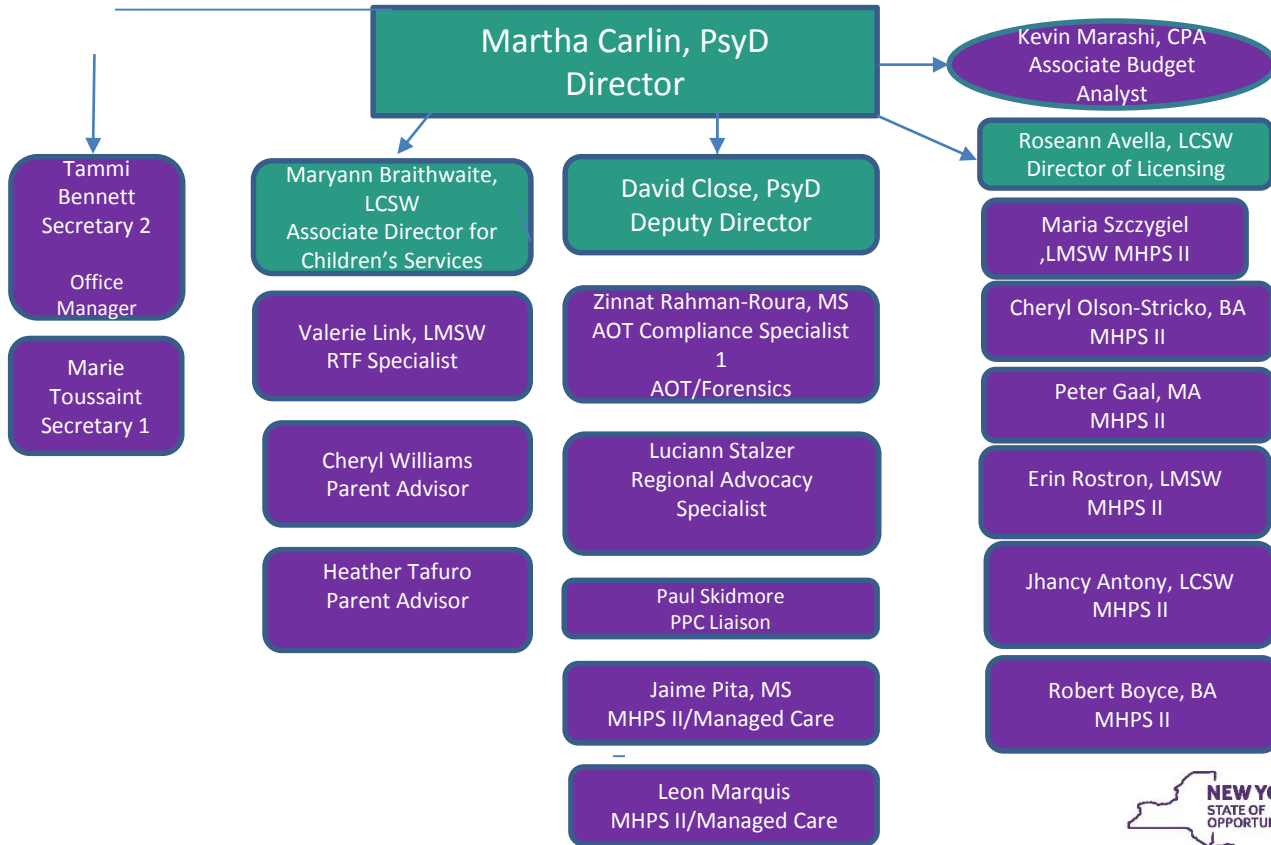
“New York State has a large, multi-faceted mental health system that serves more than 700,000 individuals each year. The Office of Mental Health (OMH) operates psychiatric centers across the State, and also regulates, certifies and oversees more than 4,500 programs, which are operated by local governments and nonprofit agencies. These programs include various inpatient and outpatient programs, emergency, community support, residential and family care programs.”

www.omh.ny.gov/omhweb/about/



LIFO Organizational Chart

November 2017



Summary of Available Services

Clinics*

Assertive Community Treatment (ACT) Teams*

Personalized Recovery Oriented Services (PROS)

On-Track New York*

Mobile Crisis – Mobile Integration Teams – Mobile Residential Support Teams*

Community Residences – Apartment Treatment Programs-Supported Housing*

Crisis Beds for Adults and Children*

* Established or Expanded through Reinvestment Dollars



Office of
Mental Health

Suffolk County Resources

Suffolk County Mobile Crisis Team

- Target Population:
 - Child/Adult experiencing a psychiatric crisis
- Services Offered:
 - Phone screening/verbal intervention
 - Assessment & intervention at home or community
 - Arrange with police for transport to ER if needed
- Hours of Operation:
 - 10:00 AM – 11:00 PM, 5 days/week
- Contact Information: 631-952-3333



Children's SPOA (Single Point of Access)

- Target Population: Children ages 5 - 17
- Services Offered: Access to Services:
- | <u>In-Home</u> | <u>Out of Home</u> |
|---------------------|--------------------------------|
| HCBS Services | Residential Treatment Facility |
| ICM and SCM | Community Residences |
| Family Support Svcs | Teaching Family Home |

Contact Information: Dr. Kathleen Herz

- Phone: (631) 853-2949
- E-mail: kathleen.herz@suffolkcountyny.gov



Suffolk County On Track NY Farmingville MH Clinic

Target Population: Services Offered:

Individuals age 16–30 experiencing a first episode of psychosis (FEP)

Services Offered:

- Individual, Group & Family Treatment
- Medication Management

Hours of Operation:

Contact: Lisa Gatti

Phone: (631) 854-2400



Nassau and Suffolk County Mobile Integration Team (Children and Adolescents)

- **Target Population:**
Under 18 with Serious Emotional Disturbances
- **Services Offered:**
 - Psychiatric Rehabilitation
 - Parent/Family Support
 - Skill Building
 - In-Home Respite
 - Community Linkage
 - Crisis Intervention
 - Outreach
 - Health Teaching
 - In-school Supports



Mobile Integration Team (Children and Adolescents)

- **Hours of Operation:**
 - Monday 6am-5pm;
 - Tuesday, Wednesday, Thursday 6am-7pm; Friday 8am-7pm;
 - Saturday 11am-7pm; Sunday 6am-2pm
 - Contact Information: Carol Assenza
 - Phone: (631) 370-1922
 - Fax: (631) 370-1679
 - E-mail: Carol.Assenza@omh.ny.gov



- **Target Population:**
 - 18 years and over with Axis I diagnosis
- **Services Offered:**
 - Health Teaching
 - Health Assessment
 - Skill Building
 - Psychiatric Rehabilitation & Recovery
 - Peer Support and Skills Training
 - Collaboration with Legal System
 - Outreach and Engagement
 - Collaboration with ED staff
 - Physical Health Care
 - Consultation and Information
 - Behavioral Support and Consultation
 - Facilitation of Community Support and Care
 - Brief Therapeutic Support
 - Family and Caregiver Support and Skills Building



Adult Mobile Integration Team

Hours of Operation:

Monday - Friday 8:00AM - 6:00PM

Saturday - 8:00 AM - 4:30 PM

Contact Information: Martin Godek, TTL

Suffolk MIT (631) 924-4411 Ext 244

Suffolk Contact Thomas Cromer

Thomas.Cromer@omh.ny.gov

E-mail: Martin.Godek@omh.ny.gov

Sagamore Crisis Respite House – January 2018

- **Target Population:** Children 10 – 17 who are experiencing a crisis in their residence
- **Services Offered:** 8 bed program
 - up to 2 week length of stay
 - Crisis Stabilization
 - Behavior Support
 - Medication Education and Training
 - Family and Peer Support
 - Parenting Education
- **Hours of Operation:** 24/7
 - (Intake Monday – Friday 8:30 – 5:00)
- **Contact Information:**
 - (631) 370-1606 - ask for Respite/Intake



Suffolk Co. Children's Crisis Respite Program
Coordinated by: Sagamore Children's Psych Center

- Target Population: Children under age 18
- Services Offered: For up to 21 days:
 - Short-term residential care during psych crisis
 - Structure and support to stabilize symptoms
 - Respite for the family
 - Assessment and crisis planning
 - Linkage to appropriate services
- Hours of Operation: Monday-Friday, 9:00 - 5:00
- Contact Information: Phone: (631) 370-1701



WellLife Network

Home Based Crisis Intervention (HBCI)

- Target Population: Children/Youth 5 – 17 in crisis
- Services Offered: 4-6 week period of in-home services
 - Team of Crisis Counselor, Clinical Supervisor, Psychiatrist
 - Advocacy with schools, justice system, financial support
 - Parent Support/Education
 - Behavior Modification Training
 - Linkage with other treatment/support services
 - Aftercare component for children discharged from hospital
- Hours of Operation:
 - Monday – Friday 9 AM – 5 PM for Referrals
 - 24/7 pager coverage for accepted cases
- Contact Information: Meghan Clancy
- Phone: (631) 920-8302



Crisis Respite Beds

Concern for Independent Living

- Target Population:
 - Adults w/ SMI (Serious Mental Illness) dx experiencing a housing crisis
 - Must have permanent housing
- Services Offered: Respite for up to 28 days
 - Peer support
 - conflict resolution
 - stress reduction techniques
 - substance abuse supports,
 - wellness self-management,
 - de-escalation to avoid more intensive placement



Crisis Respite Beds Concern for Independent Living

- Hours of Operation: 24/7 for up to 28 days
- Contact Information:
 - Matt Mangiapane
631-947-2900 x 1424



Hospital Diversion Program FREE

- Target Population:
 - Adults with SMI who need short term respite
 - Services Offered:
 - 4 bed Hospital Diversion/Crisis Respite Services program
 - Temporary respite care for 7-14 days (not to exceed 30 days)
 - Assess, monitor and help develop support plan and relapse prevention plan, in collaboration with outpatient providers
- Hours of Operation:
 - 24 hours/day, 7 days/week
- Contact Information: Amy Grosshandler
- Phone: (631) 676-3299



Service Planning Unit

Federation of Organizations

- **8-Bed Program** providing temporary housing at the Irving Berkowitz Residence
- **Target Population**
 - Adults 18+ residing in Suffolk County diagnosed with mental illness
 - currently hospitalized (for psych or medical reasons) who have no solidified housing plan upon hospital discharge and desire to enter housing via the SPA system.
- **Services Offered:**
 - Temporary 28-day housing placement with rapid access to housing via SPA for more permanent housing in the community in a community residence, CR/SRO, Apartment Treatment or Supported Housing.
 - Rapid access to an intake for the SPU Program while in the hospital.
 - Single bedrooms, shared kitchens, bathrooms and common areas
 - The residence has 24 hour, 7 day a week housing staff
 - Medication monitoring, linkage to medical and psychiatric care, community integration, etc.
- **Contact information:**
- Randi Giebel, LMHC, Intake Coordinator
- 631-236-4299 ext. 3122
- rgiebel@fedoforg.org



Forensic Supported Housing FREE

Target Population:

Adults Released from Prison

Adults discharged from Pilgrim with Prison History

Services Offered:

Supported Housing with additional supports

Evidence Based Practices incl. Motivational Interviewing

Hours of Operation: 24/7

Contact Information: Holly Richards-Mosby

Phone: (516) 870-1631

Residential Respite Program Federation of Organizations

- **Target Population:**
 - Adults 18+ residing in Suffolk County who need a short-term respite from their current housing situation
 - Individuals seeking a respite stay need to be able to manage medications independently and have housing to return to after their temporary stay in Respite.
- **Services Provided:**
 - Temporary stay of up to 14-days
 - 2 male beds available in Deer Park and 1 female bed available in Patchogue
 - Peer worker resides in the home and is available to provide peer support
 - A Case Manager available to meet with individual in respite on a daily basis for additional support
- **Hours of Operation:** 24 hours a day, 7 days a week
- **Contact information:** Lauren Torreblanca, MHC, Program Manager
 - 631-236-4299 ext 5113
 - ltorreblanca@fedoforg.org

Referrals can be faxed to: 631-299-2449 or emailed to: respitefax@fedoforg.org



Residential Transitional Support Teams

Federation of Organizations

- Two Multidisciplinary teams working throughout Suffolk County
- **Target Population:**
 - Adults living in Supported Housing who need additional services
 - Adults living in other levels of SPA housing who need additional services in order to move into Supported Housing
- **Services Offered:**
 - Medication Management
 - Symptom Management
 - Coordination and Collaboration with Health Services
 - Daily Living Skills Training, Travel Training, Community Integration
 - Linkages to Community Resources incl. employment and educational services
 - Crisis Intervention including access to a 24-hour emergency line and warm line
- **Hours of Operation**
 - 8am-9pm seven days a week
- **Contact Information - Eric Schatzel, Program Manager**
 - Phone: 631-299-2530 ext. 5111
 - eschatzel@fedoforg.org
- Benjamin Turner, Program Supervisor Team A 631-236-4299 ext.5112 bturner@fedoforg.org
- Marci Mirisola, Program Supervisor Team B 631-236-4299 ext. 3106 mmirisola@fedoforg.org
- Referrals can be made by the service recipient, housing or treatment providers, care coordinators, etc.



- Target Population:
 - Adults living in Supported Housing
- Services Offered:
 - Wellness Services; Smoking Cessation
 - Medication management; Symptom management
 - Health services coordination
 - Skill development
 - Crisis Intervention
 - Educational and Vocational services and supports
 - Referrals and Linkage to community resources
- Hours of Operation:
 - 9AM – 5 PM, 7 days/week



- Options for Community Living
 - Linda Licato – (631) 361-9020 X 1182
- Concern For Independent Living
 - Denise Duncan (631) 758-0474 ext. 2223



Wellness and Recovery Centers

- HALI (Western Suffolk County)
 - Peer Operated Wellness Center
 - (Former LIFE Program)
 - (631) 234-1925
- Association for Mental Health & Wellness
 - (Eastern Suffolk County)
 - Recovery Center East
 - Peer Operated
 - Riverhead Synergy Center for Recovery & Wellness
 - Katherine Tollefsen – (631) 369-4418 x 1901



Nassau County Resources



Behavioral Health Helpline

- Target Population:
 - Anyone needing assistance or referral
- Services Offered:
 - Screening support & crisis intervention
 - Referral to services
- Hours of Operation:
 - 24 hours/day, 7 days/week
- Contact Information:
 - (516) 227-8255 (T-A-L-K)



Nassau County Mobile Crisis Team

- Target Population:
 - Child/Adult experiencing a psychiatric crisis
- Services Offered:
 - Phone screening/verbal intervention
 - Assessment & intervention at home or in the community
 - Arrange with police for transport to Emergency Room if needed
- Hours of Operation: 10:00 AM – 11:00 PM, 7 days/week
- Contact Information: (516) 227-8255 (T-A-L-K)



Assessment and Referral Center (ARC)

- Target Population: Individuals on Medicaid seen at the Nassau Co. DSS Building
- Services Offered:
 - Behavioral Health Assessment and Referrals
 - Connection to Health Home Care Management
- Hours of Operation:
 - Monday – Friday 9:00 AM – 4:00 PM
- Contact Information:
 - (516) 227-8255



Angelo Melillo Center Safe Harbor Program

- Target Population: Adults experiencing a crisis requiring short-term respite placement
- Services Offered: 7 bed transitional residence
 - Up to 28 day length of stay
 - Meds & treatment monitoring, ADL training
- Hours of Operation: 24/7
- Contact Information:
 - Phone: (516) 676-2388 Ext. 134
 - Direct # (516) 559-8626



Crisis Respite Beds- CN

Guidance and Counseling

Target Population:

- Adults with SMI diagnosis experiencing a housing crisis.
- Must have permanent housing

Services Offered: Respite for up to 28 days

- Peer Support
- Stress reduction techniques
- Wellness Self-Management
- Conflict Resolution
- substance abuse support
- de-escalation to avoid more intensive placement

Crisis Respite Beds- CN Guidance and Counseling

Contact Information: Laura McNamee

Phone: (516) 822-6111 ext. 1276

E-mail: lmcnamee@centralnassau.org



Turquoise House

- Target Population:
 - Adults who need short term respite from their current home environment
 - Self-referral
- Services Offered:
 - Hospital Diversion program
 - Peer-run temporary respite care for 1 – 7 nights
 - Develop goals to address current or future crises and a plan to improve life circumstances

Hours of Operation: 24 hours/day, 7 days/week

- Contact Information: Melissa Wettengel E-mail: mwettengel@mhanc.org
- Phone: (516) 489-0100 extension 3



Forensic ACT Team (FACT)

CN Guidance and Counseling Center

- **Target Population:** Adults with SMI diagnosis, forensic history, multiple hospitalizations, hx of non-compliance with outpatient treatment and medication
- **Services Offered:**
 - All traditional ACT Team Services
 - Services provided at home & in the community
- **Hours of Operation:** 24/7 availability
- **Contact Information:** Victoria Georgios
 - Phone: (516) 822-6111 X1447



Forensic Supported Housing (FREE)

- Target Population:
- Adults Released from Prison
- Adults discharged from Pilgrim with Prison History
- Services Offered:
- Supported Housing with additional supports
- Evidence Based Practices incl. Motivational Interviewing
- Hours of Operation: 24/7
- Contact Information: Holly Richards-Mosby
 - Phone: (516) 870-1631



Adult Mobile Integration Team

- Hours of Operation:
 - Monday - Friday 8:00AM - 6:00PM
 - Saturday - 8:00 AM - 4:30 PM
- Contact Information: Martin Godek, TTL
 - Nassau MIT (631) 761-4507
 - Nassau Contact is Michael Finneran
Michael.Finneran@omh.ny.gov
 - Suffolk MIT (631) 924-44111 Ext 244
 - Suffolk Contact is Thomas Cromer
Thomas.Cromer@omh.ny.gov
- E-mail: Martin.Godek@omh.ny.gov



Mobile Residential Support Team

- Target Population:
 - Adults living in Supported Housing
- Services Offered:
 - Medication management
 - Symptom management
 - Health services coordination
 - Daily living skills training
 - Crisis Intervention
 - Linkage to community resources
- Hours of Operation:
 - 9AM – 5 PM, 7 days/week



Mobile Residential Support Teams

Contact Information

- Central Nassau Guidance Center [Megan Lyons- \(516\) 681-2320 x1302](#)
- Federation of Organizations
 - [Eric Schatzel - \(631\) 299-2530 x5111](#)
 - [Ali Rosen - \(631\) 236-4325 x5155](#)
- FREE - [Holly Richards-Mosby - \(516\) 870-1631](#)
- Melillo – [\(516\) 676-2388](#)
- SAIL
 - [Gary Conn - \(516\) 855-1800 x1041](#)
 - [Amanda Kearner – \(516\) 477-6511](#)



Children's SPOA

- Target Population: Children ages 5 - 17
- Services Offered: Access to Services:
 - In-Home Out of Home
 - HCBS Services Residential Treatment Facility
 - ICM and SCM Community Residence
 - CCSI and CCCT Teaching Family Home
 - Family Support Services
- Contact Information: Omayra Perez or Kathryn Artesani
 - Phone: (516) 227-7057
 - E-mail: Omayra.Perez@hhsnassaucountyny.us
Kathryn.Artesani@hhsnassaucountyny.us



South Shore Clinic-Pathways Program Home Based Crisis Intervention (HBCI)

- Target Population: Children/Youth 5 – 17 in crisis
- Services Offered: 4-6 week period of in-home services
 - Team of Crisis Counselor, Clinical Supervisor, Psychiatrist
 - Advocacy with schools, justice system, financial support
 - Parent Support/Education
 - Linkage with other treatment/support services
 - Aftercare component for children discharged from hospital
- Hours of Operation: Monday – Friday 9 AM – 5 PM for Referrals
 - 24/7 pager coverage for accepted cases
- Contact Information: Michelle Madison
 - Phone: (516) 868-3030 x114



Nassau Children's Crisis Respite

- Target Population: Children under age 18
- Services Offered: For up to 14 days:
 - Short-term residential care during psych crisis
 - Structure and support to stabilize symptoms
 - Respite for the family
 - Assessment and crisis planning
 - Linkage to appropriate services
- Hours of Operation: Monday – Friday, 9:00 - 5:00
- Contact Information: Sheri-Ann Best
 - Phone: (516) 489-2322 x1318
 - E-mail: Sbest@mhanc.org



Children's Hospital Discharge Program

- Target Population:
 - Children admitted to psychiatric inpatient units
- Services Offered:
 - Assist with linkage to community resources
- Hours of Operation:
 - Monday – Friday, 9:00 AM – 5:00 PM
- Contact Information: Sheri-Ann Best
 - Phone: (516) 489-2322 X1105
 - E-mail: Sbest@mhanc.org



North Shore Child & Family Guidance

Urgent & Emergency Care Services

- Target Population: Children under age 18
- Services Offered:
 - Screening by Triage Coordinator
 - High-Risk Evaluation within 24 – 36 hours
 - Individual, family and group treatment
 - Work closely with the child's support system
 - Bi-lingual/Bi-cultural clinicians for Spanish speakers
- Hours of Operation: Monday - Thursday 9am to 9pm,
Fridays 9am-5 pm

Contact Information: Elissa Smilowitz

- Phone: (516) 626-1971



Certified Community Behavioral Health Clinic

CCBHC promotes a wide range of immediate screening, diagnosis, and linkage to treatment for mental health, addictions, and chronic health conditions – through a wider range of integrated services. Services are provided to individuals with serious mental illness, those with long-term chronic addiction, underserved and low-income individuals and families, and at-risk members of the armed services and veterans.

Benefits of CCBHC are:

- Easy access to services for all residents regardless of ability to pay
 - Whole-person, integrated care
- Specialized 24/7/365 services to stabilize people experiencing crisis

Billing: CCBHC services are equally available to people who are insured, uninsured, or on Medicaid.

For more information about this program call 516-822-6111

CCBHC is a 2 year pilot program that is authorized by the U.S. Department of Health and Human Services and overseen by New York State Office of Mental Health



**Office of
Mental Health**

New/Specialty Clinic Programs

- **EPIC Long Island – Addition of Children’s Services**
 - Debra Cahill – (516) 739-7733 X1-324
- **Charles Evans Center**
 - (516) 622-8888
- **Long Island FQHC** www.lifqhc.com 516-296-FQHC (3742)
- **Long Beach Reach** – Joseph Smith, PhD (516) -889-2332
- **Hispanic Counseling Center** Claudia Boyle – (516) 538-2613
- **Certified Community Behavioral Health Clinic** – CN Guidance and Counseling Center



Nassau County On Track NY

Mercy Medical Center

Target Population: Services Offered:

Individuals age 16–30 experiencing a first episode of psychosis (FEP)

Services Offered:

- Individual, Group & Family Treatment
- Medication Management

Hours of Operation: 8:30 – 4:30

Contact: Cynthia Taylor Scott: 516-705-3400 ext. 3202



Resources

NYS OMH website

<https://www.omh.ny.gov/>

Suffolk County Department of Mental Hygiene

<http://www.suffolkcountyny.gov/Departments/HealthServices/MentalHygiene.aspx>

Nassau County Office of Mental Health, Chemical Dependency

& Developmental Disabilities

<https://www.nassaucountyny.gov> (516) 761- 7057

Suffolk County Department of Social Services – Vincent Rothaar

Vincent.Rothaar@Suffolkcountyny.gov (631) 854-9550

OMH Long Island Field Office (631) 761-2508

